

Cartridge pump – KP250

for time-controlled feeding/dosing of substrates

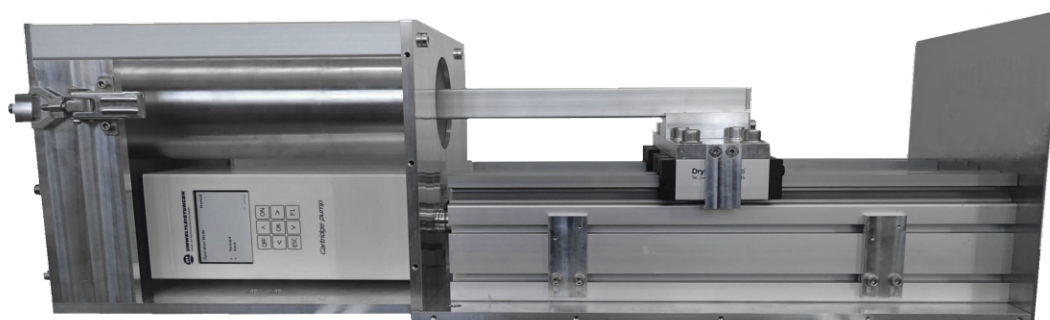


Fig. 1 : Cartridge pump – without cover, horizontally mounted

Applications

- Feeding of viscous, flowable substrates and supplements
- Suitable for cartridges with AD 100 mm, L 330 mm
- Settings menu included in pump control – Independent use possible
- Integration in higher system via MODBUS interface

Equipment status

- Dosage of a maximum of 2,4 liters of substrate in a definable time frame
- Powered by an electrical step motor with a torque of 210 Ncm
- Inner diameter of outlet 12 mm, other diameters on demand
- Pump control with graphic display and keypad

Features

Motor data	Electrical step motor, 210 Ncm, 230V/50Hz
Casing demensions	Ca. 900 mm x 250 mm x 150 mm
Casing material	Aluminum, stainless steel
Cartridge dimensions	AD 100 mm, L 330 mm, Volumen ca. 2,4 liters
Cartridge material	Polypropylen
Modes	1. Time setting: Emptying the cartridge in a set time. 2. Volume flow setting: Emptying the cartridge with a set volume flow
Reactors	Suitable for all BTP2 models and sizes – also as a upgrade for other existing bioreactors
Pump control	Graphic colour display, keypad for the navigation through the settings menu
Equipment	Full cartridge pump set, including cartridge, connection tube, pump control software



UMWELTLEISTUNGEN

Umwelt- und Ingenieurtechnik GmbH Dresden
Postfach 80 01 40, 01101 Dresden, Deutschland
Zum Windkanal 21, 01109 Dresden, Deutschland

Telefon: +49 351 88646-82
Fax: +49 351 8865774
E-Mail: vertrieb@uit-gmbh.de
Internet: www.uit-gmbh.de

Cartridge pump – KP250

for time-controlled feeding/dosing of substrates

Handling – Cartridge exchange

For the cartridge exchange, the cartridge pump is equipped with a quick lock.

To avoid any spilling, the cartridge pump can only be started once the quick lock is fully closed.

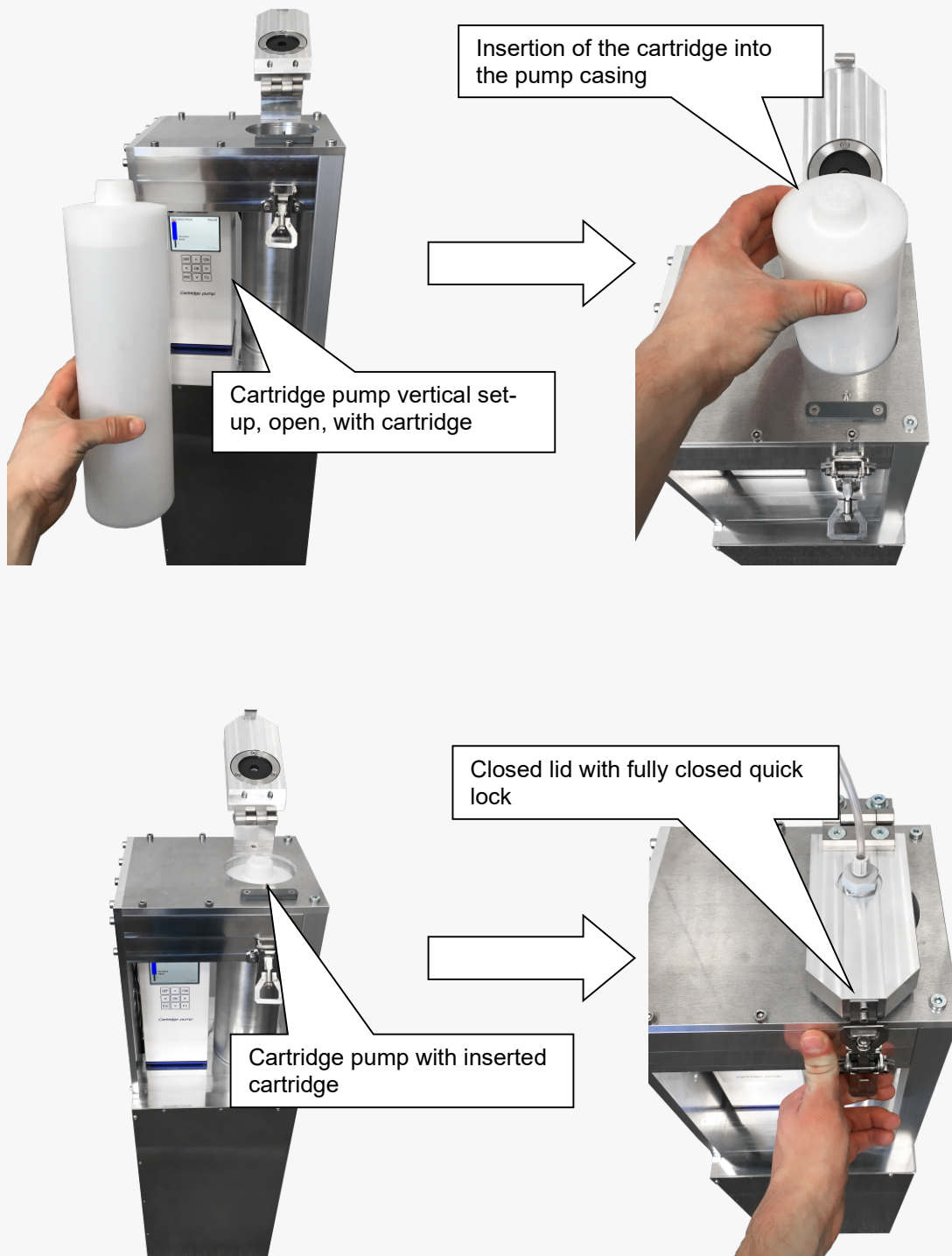


Fig. 2-5 : Insertion of a new cartridge

The cartridge pump can be mounted vertically or horizontally.



UMWELTLEISTUNGEN

Umwelt- und Ingenieurtechnik GmbH Dresden
Postfach 80 01 40, 01101 Dresden, Deutschland
Zum Windkanal 21, 01109 Dresden, Deutschland

L 37_03

Telefon: +49 351 88646-82
Fax: +49 351 8865774
E-Mail: vertrieb@uit-gmbh.de
Internet: www.uit-gmbh.de